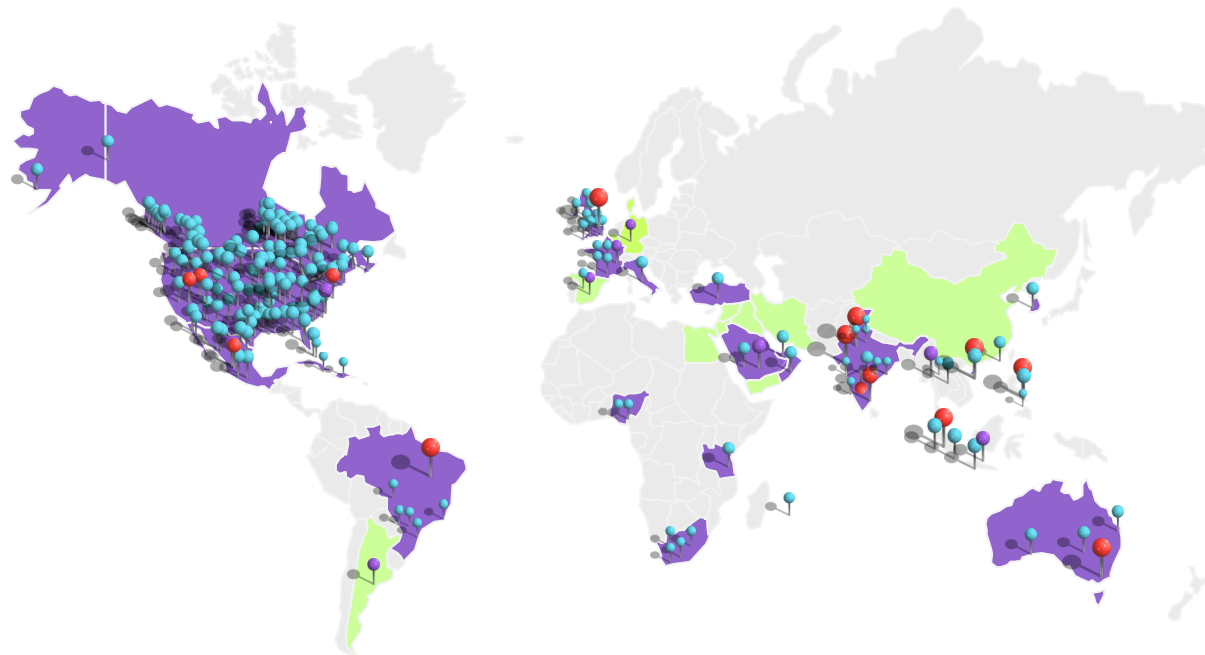


About FatPipe Networks

- Innovating and deploying Hybrid and SD-WAN since 2002.
- Over 10,000 successful customer deployments.
- 15 seminal patents with over 180 technical claims.
- The original Hybrid WAN/SD-WAN Company
 - “SD-WAN before SD-WAN was cool.” - Gartner
 - “FatPipe began offering SD-WAN solutions long before the term became part of our vernacular” - ZK Research



What is Managed ASEoD?

Secure Ethernet VPN and Internet connectivity over a single connection that combines:

ASEoD

- **Point-to-point or multi-point connections** – provides a secure Virtual Private Network between two or more locations
- **Internet Access** – provides flexibility to split the circuit using an Internet Ethernet Virtual Connection (IEVC) to directly access the Internet
- **Traffic prioritization** – Five Classes of Service (CoS) allowing selection of prioritization based on needs
- **Flexibility and Assurance** – Select the maximum bandwidth needed from 2 Mbps up to 100 Gbps in near real time and pay only for what is used
- **Adding or changing** network services in near real time
- **Provisioning new ports** quickly, often in days or less compared to weeks

+

Managed Device

- **Single-device solution provides**
 - Routing
 - Firewall
 - Intrusion Prevention System (IPS)
 - Switching
 - Web filtering
- **Single IP Address** – can be used to support multiple devices or servers
- /29 Available for (5 Static IPS)
- **Installation project management** of device and circuit, with on-site implementation as needed
- **Proactive management** - Single point-of-contact that monitors the service 24 x 7 x 365
- **Enables deployment of new features** as they become available, such as WiFi

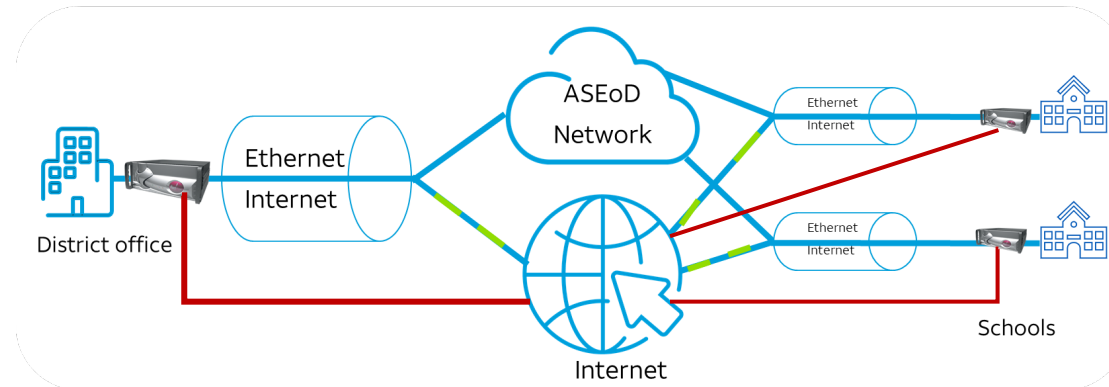
FAT Pipe Networks - All-In-One Single Site Edge Solution

Features Included with Managed ASEoD Service

- Outbound Load Balancing (SDWAN)
- Link Failover
- QoS and Policy based path selection (SDWAN)
- Stateful firewall with Web Filter & IPS
- Cellular via external 4G/LTE
- Monitoring
 - Email /SMS Alerts
 - ✓ Link Status
 - ✓ Device Status

Optional Features/Functions

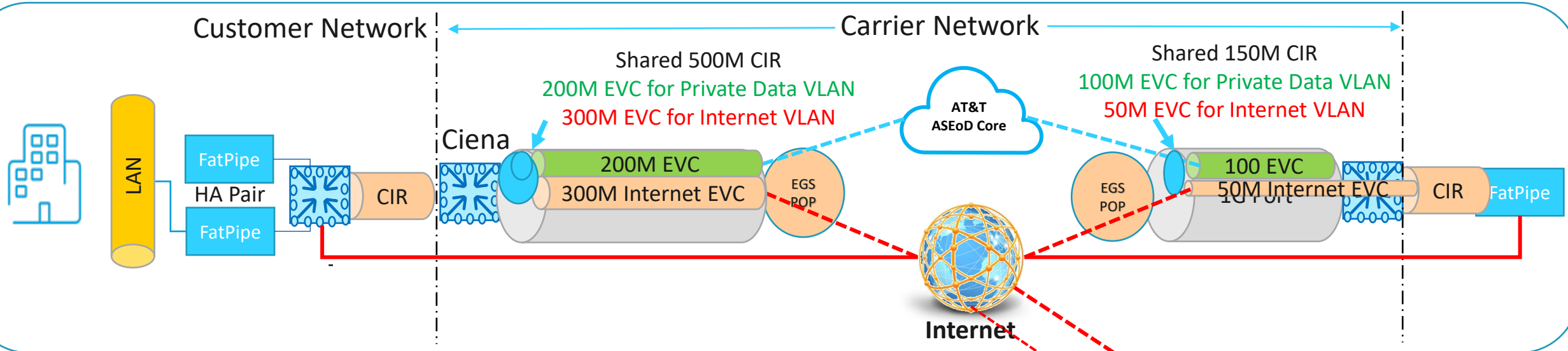
- SmartDNS (Inbound Load Balancing)
- SSL based remote user connectivity
- VPN Secure connectivity
- Application based path selection (SDWAN)
- Application Visibility
- WAN Optimization



ASEoD Internet Offload



Simplified Reliable Customer Network
Simple Business Center Portal with near Real-time Provisioning.



- Internet available on ASEoD in region only
- Internet EVC UNI circuits must be VLAN based
- Port to UNI MACD now available in Business Center
- Internet EVC with CoS (non-critical high fixed)
- Dual stack IP addresses with /30 IPV4 and /64 IPV6 and /29 available
- Don't forget to add a AT&T 4G/5G Wireless Backup

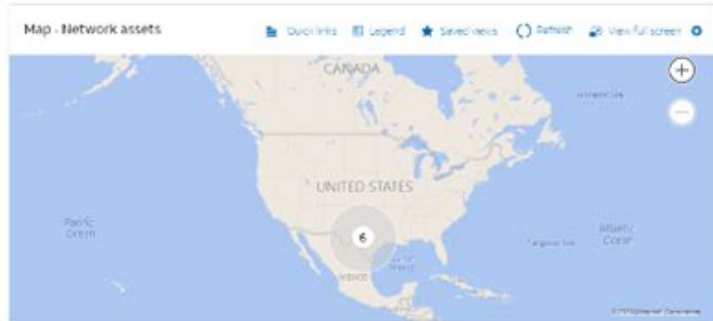
FatPipe

Non-ASEoD Site
Internet Only

CIR - Bandwidth

Access/Port

Business Center



Qualification

Select service

AT&T Switched Ethernet

AT&T Switched Ethernet Service offers Ethernet connectivity for customers with multiple locations in a metro area. Some locations may also qualify for Network on Demand capabilities.

[Check availability](#)

Reports

All reports

My favorite reports

Reports activity

To view written reports that aren't available in Business Center, go to the BusinessDirect Tools widget.

Orders

Total Orders	313
In Progress	5
On Hold	0
Canceled	300
Completed	0

[View all orders](#) [Start order](#)

Simple EVC

Actions

- Edit port
- Move port
- Add EVC
- Add Internet EVC
- Delete port

Circuit Management

Select EVC settings

Bandwidth / Committed information rate (CIR)
Change the bandwidth settings for this segment.

Note: The bandwidth available for this EVC segment is the maximum bandwidth available for this network. All EVCs terminating on this port share the maximum available bandwidth.

1 Mbps

90 Mbps

VLAN ID

123

Near Real-time Availability

Internet Ethernet Virtual Connection (EVC)		
Service ID	Service Name	Service Type
AT&T Switched Ethernet	AT&T Switched Ethernet	AT&T Switched Ethernet
Service ID	Service Name	Service Type
AT&T Switched Ethernet	AT&T Switched Ethernet	AT&T Switched Ethernet
Service ID	Service Name	Service Type
AT&T Switched Ethernet	AT&T Switched Ethernet	AT&T Switched Ethernet
Service ID	Service Name	Service Type
AT&T Switched Ethernet	AT&T Switched Ethernet	AT&T Switched Ethernet

No Cost*

One-time charges (USD)

0.00

Monthly charges (USD)

0.00

[Submit order](#)

* If bandwidth is available



KEY DIFFERENTIATORS

FatPipe offers unique patented feature capabilities in a complete easy to deploy SD-WAN solution at lower overall cost

FatPipe offers over a dozen patented features that uniquely sets it apart from the competition in SD-WAN

FATPIPE KEY DIFFERENTIATORS:

Enterprise- Class Reliability with Maximum Efficiency

- **Single Stream Load Balancing** - eliminates the need for duplication of data and costly unnecessary bandwidth
- **Direct Peer-to-Peer, “Over the Top” SD-WAN** - FatPipe SD-WAN dynamic policy routing software is native to on premise equipment, creating no increased latency and “extra hops” in traversing to WAN cloud (that is present in Cloud Gateway based SD-WAN vendors: Therefore, no need for extra bandwidth or overhead on network infrastructure
- **Circuit Links** – Supports up to 15+ ISP disparate IP circuits per site and multiple disparate MPLS circuits which is 3-4 times greater than the competition
- **Inbound Load Balancing and Site Failover:** Only SD-WAN technology with automatic session failover, on-premise inbound HA redundancy (patented FatPipe SmartDNS), and DR site failover.
- **Branch Autonomous Operation:** FatPipe architecture ensures that even if a remote Orchestrator is unavailable due to outages, the local boxes will continue to operate and transmit data efficiently.
- Raises WAN network reliability up to 99.9999%

Large Capacity Deployment Capabilities

- **High Bandwidth** - 10Mbps to 100Gbps bandwidth throughputs
- **Cloud Hosted High Bandwidth** – FatPipe Cloud Hosted SDWAN can effectively load balance downloads with a capacity 4X that of the competition

Full WAN Optimization over Multiple Links

- **Selective encryption** – Encrypts only broadband traffic, not MPLS
- **Optimization** - Compression, caching, deduplication, TCP acceleration-over multiple ISP links-can be licensed as part of the solution, as opposed to a third-party appliance add-on.

Secure Communications

- **Stateful Firewall** - efficient secure data transmission over disparate networks
- **MPSec** - patented multi-path security increases WAN transmission security by orders of magnitude by introducing a blockchain level of security for transmission between data paths
- **FIPS-140-2 Certified** - by NIST for use by the U.S. Government

Flat Networks – Only SDWAN to Support Layers 2-7 (unique to Fatpipe, 4 patents)

- Flat network support allows FatPipe to be deployed in customer networks with dark fiber or point-to-point ASE for network resiliency across physically separate locations.
- Fabric extension across broadband gives customers the ability to connect their branches to the SDN datacenter seamlessly

CUSTOMERS ARE LOOKING FOR...

- Ability to use low-cost transport effectively
- Secure Hybrid Cloud / WAN environments
- Automatic Failover with no service interruptions
- Control of Inbound call and data routing
- QoS for VOIP
- Ability to integrate multiple carriers and transport types including Layer 2



SOLUTION COMPONENTS:

1. FatPipe appliance – Physical (5 models) or virtual
2. FatPipe – 7 networking functions in 1 box
 1. Load Balancer (inbound & outbound)
 2. WAN Optimizer
 3. QoS
 4. Router
 5. Traffic Shaper
 6. Firewall
 7. Reporting Software

Contact :

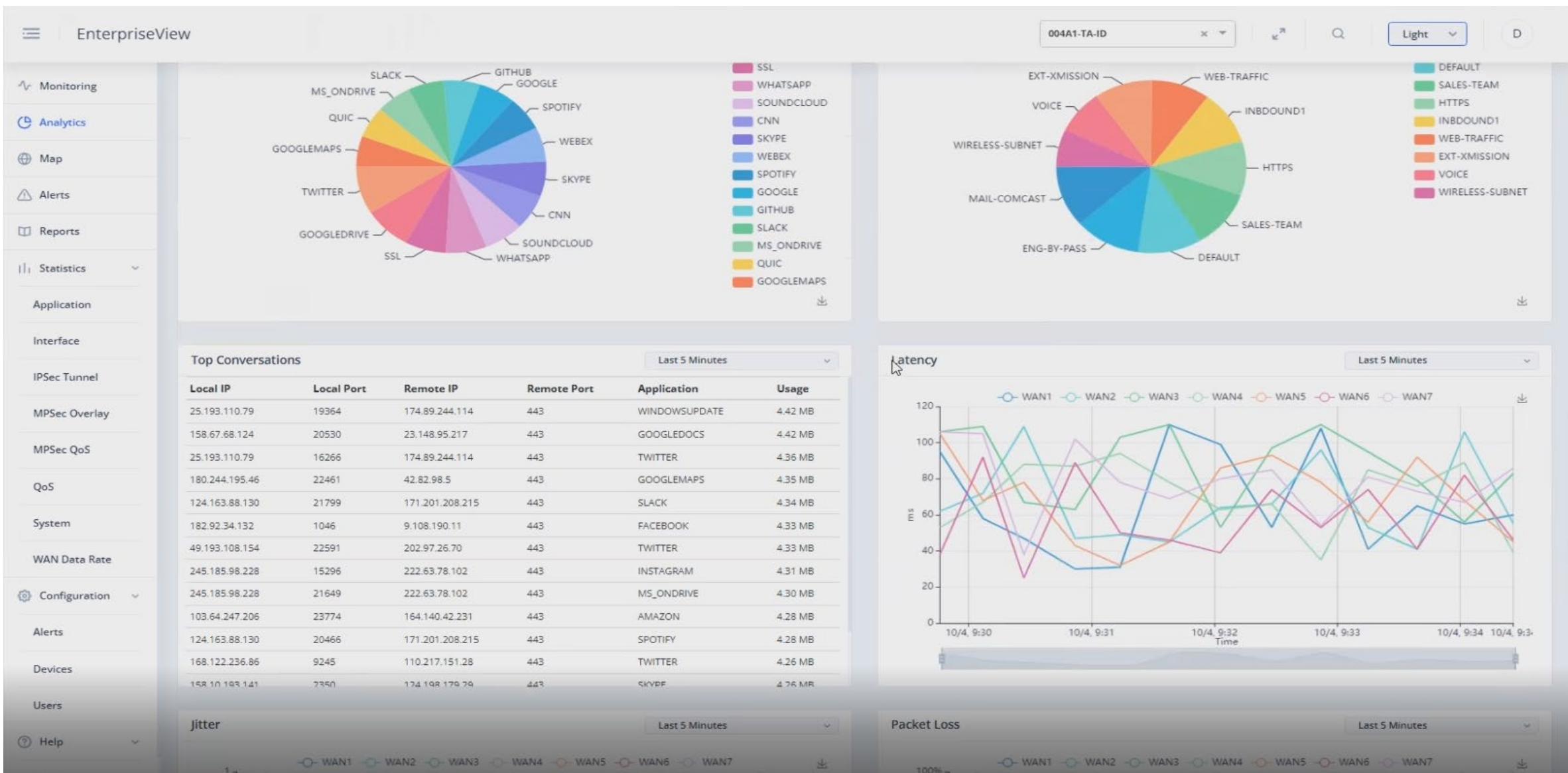
Chris Andersen,

chris.a@fatpipeinc.com

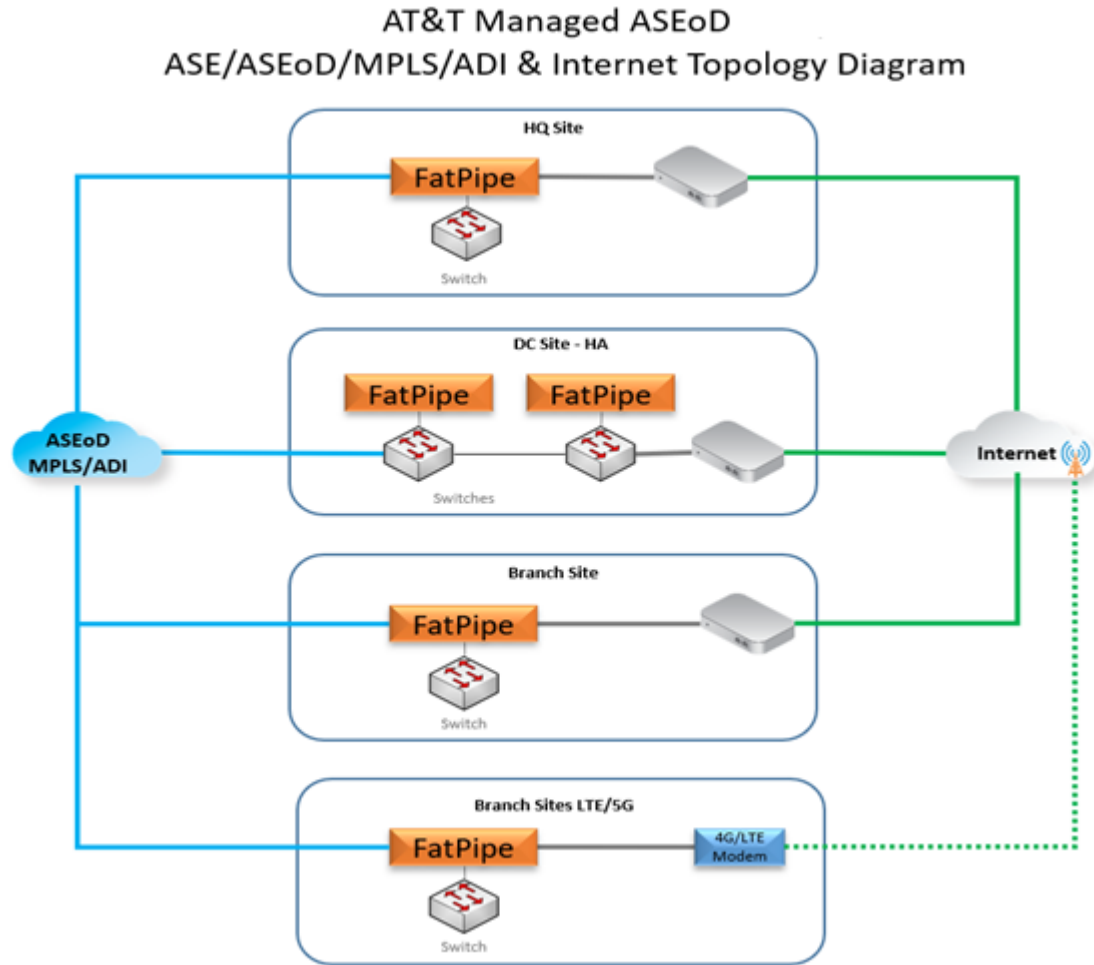
(319)-323-1546

Cell (319)-329-4773

for a quote & deal registration



Credit Union-12 Sites (Jackson, TN): Value Added Services



PROBLEM

The Credit Union wanted to take a new approach for a more efficient solution. Their objective was to move from MPLS to **ASEoD with Internet Offload**. They currently have 13 locations, with 11 in network and two out of network.

Wished to connect in a “Hub-and-Spoke” environment, and needed a fail safe for the ASEoD connection with the Data Center-with the same security as the network currently has.

Solution

The **ASEoD Bundled Solution** will provide the Credit Union all of their needed requirements, and the flexibility to improve on the existing network. 11 locations will be equipped with the ASEoD and Offload option at the 100Mb CIR/ 1 GB port bundled offer. Two locations will utilize local bandwidth and FatPipe MPSEC for the secure and redundant solution to connect all the locations in a full Hub-and-Spoke environment.

Leaders will be able to utilize the flexible E portal to scale bandwidth up to 1 Gig as needed while the Fatpipe will provide these Value Added Services:

- **MPSEC-** To failover the ASEoD to additional connection in the event of outage.
- **Site to Site Failover and VPN site Failover-** FatPipe will give the ability to redirect traffic from the HQ to the DR center in the event of failover.
- **QOS-** Packet prioritization for mission critical applications.
- **SMARTDNS-** Inbound Redundancy for on premise server sessions.
- **Dual VLAN Tagging-** Leaders can utilize the FatPipe to route traffic on both VLAN's.
- **Policy Routing-** FatPipe can route public use traffic down public connections.
- **WAN Acceleration-** Caching, Compressing, Deduplicating, TCP acceleration.